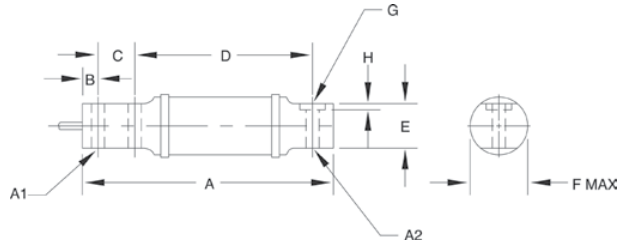


RL40BBS Single-Ended Beam, Alloy Steel, IP65



Picture is a representation of actual product



SPECIFICATIONS

Full Scale Output:
2.0 mV/V

Bridge Resistance:
50-1000 lb/750 ohms, nominal
2500 lb/347 ohms, nominal

Material/Finish:
High-alloy steel, nickel plated

Temperature:
Compensated range
0°F to 150°F/-18°C to 65°C

Safe Overload:
150% Full scale

Rated Excitation:
10V DC (15V maximum)

Deflection at Capacity:
50 lb=.015 in/.38 mm,
100 lb=.005 in/.64 mm,
200-250 lb=.030 in/.76 mm,
500 lb=.020 in/.51 mm,
1000 lb=.040 in/1.02 mm,
2500 lb=.120 in/3.05 mm

Nonlinearity:
0.03% Full scale

Hysteresis:
0.02% Full scale

Insulation Resistance:
5000 megohms

Seal Type:
Environmentally sealed with neoprene sleeve, IP65

Cable Length:
10 ft/3.1 m

Cable Diameter:
.200 polyurethane jacket

Cable Color Code:

- Green..... + Excitation
- Black..... - Excitation
- White..... + Signal
- Red..... - Signal

Warranty:
Two-year limited warranty

Approvals:



DIMENSIONS

| RATED CAPACITY | A | A1 | A2 | B | C | D | E | F | G | H |
|------------------|-------|------|------|------|------|-------|------|------|------|-----|
| lb/inches | | | | | | | | | | |
| 50-100 | 6.00 | .31 | .31 | .38 | .88 | 4.25 | 1.06 | 1.41 | — | — |
| 200-1000 | 6.62 | .52 | .52 | .50 | 1.12 | 4.25 | 1.06 | 1.41 | — | — |
| 2500 | 11.38 | .53 | .62 | .50 | 1.75 | 8.25 | 1.25 | 2.19 | 1.19 | .12 |
| kg/mm | | | | | | | | | | |
| 22.7-45.4 | 52.4 | 7.9 | 7.9 | 9.7 | 22.4 | 108.0 | 26.9 | 35.8 | — | — |
| 90.7-453.6 | 168.2 | 13.2 | 13.2 | 12.7 | 28.5 | 108.0 | 26.9 | 35.8 | — | — |
| 1134.0 | 289.1 | 13.5 | 15.8 | 12.7 | 44.5 | 209.6 | 31.8 | 55.6 | 30.3 | 3.0 |

ORDER INFORMATION

| LOAD RATING | PART # | PRICE |
|---------------------|--------|---------|
| 50 lb (22.7 kg) | 17395 | Consult |
| 100 lb (45.4 kg) | 17343 | Consult |
| 200 lb (90.7 kg) | 17396 | Consult |
| 250 lb (113.4 kg) | 17397 | Consult |
| 500 lb (226.8 kg) | 17398 | Consult |
| 1000 lb (453.6 kg) | 17344 | Consult |
| 2500 lb (1134.0 kg) | 17345 | Consult |

INTERCHANGEABLE PRODUCTS

| MANUFACTURER | MODEL | PAGE # |
|-------------------|-----------|--------|
| HBM® | BBS | 240 |
| VPG Sensortronics | 65087 | — |
| Fairbanks® | 3-481XX-1 | — |
| Fairbanks | 3-48660-1 | — |

RICE LAKE WEIGHING SYSTEMS

